

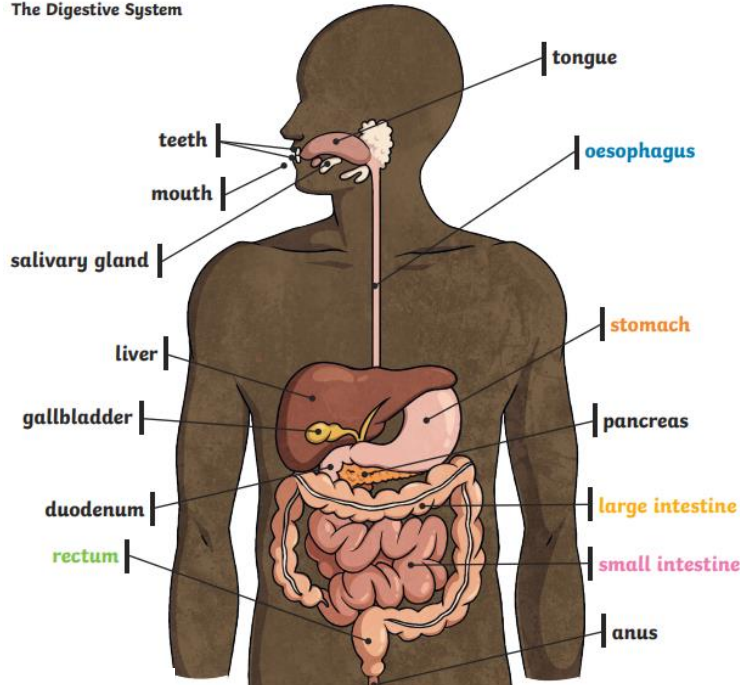
# Biology - Animals- Digestion

## Key Vocabulary



Living Things

The Digestive System



**Carnivore-** An animal that feeds on other animals.

**Digest-** Break down food so it can be used by the body.

**Herbivore-** An animal that eats plants.

**Large intestine-** Part of the intestine where water is absorbed from remaining waste food. Stools are formed in the large intestine

**Oesophagus-** A muscular tube which moves food from the mouth to the stomach.

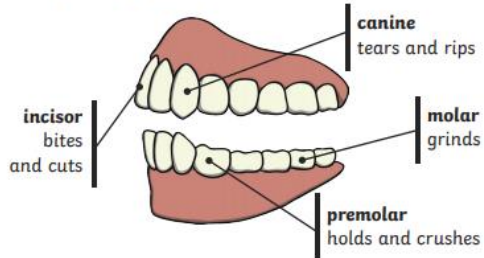
**Omnivore-** An animal that eats plants and animals.

**Rectum-** Part of the digestive system where stools are stored before leaving the body through the anus.

**Stomach-** An organ in the digestive system where food is broken down with stomach acid and by being churned around

**Small intestine-** Part of the intestine where nutrients are absorbed into the body.

Human Teeth and Their Functions



The teeth of an animal are designed to eat different foods depending on the diet of the animal. Examples of a **herbivore**, a **carnivore** and an **omnivore** skull:

